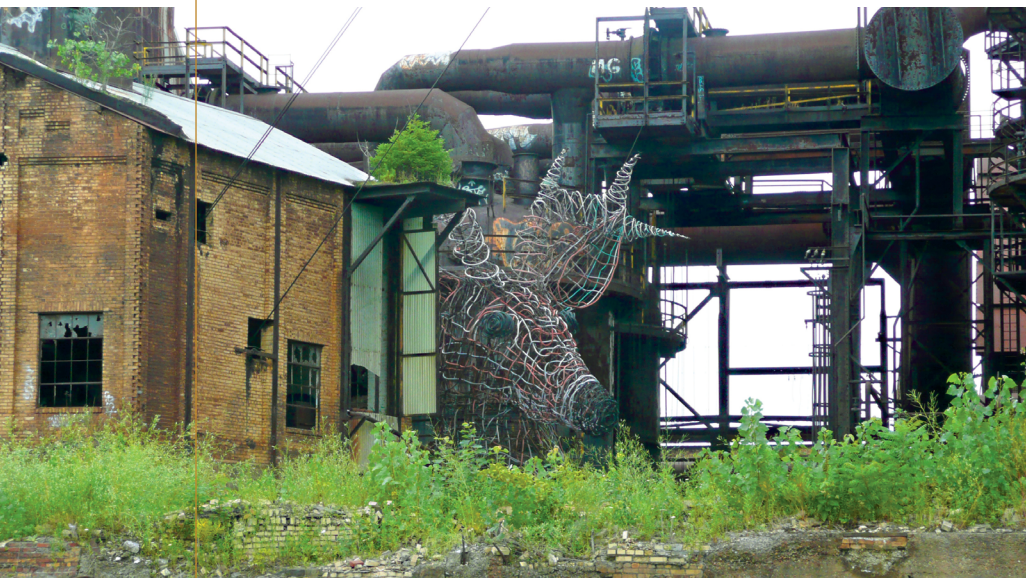




# Graduate Certificate of Museum & Heritage Studies



CRICOS code: none

UAC code: 830071

Duration: Part-time only: 1 year

Prerequisites: none



**1st** in Australia

ANU is ranked #1 in Australia (and in the top-20 in the world) for 9 disciplines across humanities, arts and social sciences.

\*QS World University Rankings by Subject 2024

The Graduate Certificate of Museum and Heritage Studies draws on our strong connections with Canberra’s leading cultural and collecting institutions to prepare you for an innovative career in this field. This program prepares you for a career in museum and heritage studies or it may give you an opportunity to commence further study to progress your career.

### Career opportunities

Students within this program also have the unique opportunity to undertake courses addressing:

- Museums and Collections
- Cultural Heritage Management
- Intangible Cultural Heritage

Students will:

- analyse, research and reflect on approaches to museums and collecting agencies and their relationships to societies;
- analyse, research and reflect on approaches to heritage management, relevant public policy and heritage agencies and their relationships to societies; and
- develop critical engagement with, and a working knowledge of, museums and heritage agencies.

Graduates from ANU have been rated as Australia’s most employable graduates and among the most sought after by employers worldwide.

In 2021, the Global Employability University Ranking, published by the Times Higher Education, rated ANU



as Australia's top university for getting a job for the 12th year in a row.

Graduates from the Centre for Heritage and Museum Studies have found employment in a wide range of cultural organisations around Australia, as well as in private sector, government and academia.

### Pathways

This Graduate Certificate can be completed as a stand alone award, or as a pathway to further study in the Master of Museum and Heritage Studies.

### Cognate disciplines

Ancient History, Archaeology, Anthropology, Creative Arts, Classics, English, Environmental Management, Fine Arts, Gender studies, History, Indigenous Studies, Museum Studies, Politics, Philosophy, Science, Science Communication, Sociology, Social Sciences, Tourism Studies, Visual Arts.

### Admission requirements

A Bachelor degree or international equivalent with a minimum GPA of 4/7.

All applicants must meet the University's English Language Admission Requirements for Students

We also recognise Prior Learning Experience.

The ANU College of Arts and Social Sciences Graduate Student Office can help with detailed information on enrolment processes.

Email [graduate.students.cass@anu.edu.au](mailto:graduate.students.cass@anu.edu.au)

### About the Centre for Heritage & Museum Studies

The Centre aims to promote and develop critical heritage and museum studies as an interdisciplinary area of academic analysis. We aim to stimulate new ways of thinking about and understanding the cultural and political phenomenon of 'heritage', and the way this interacts with cultural and public policy, management practices, cultural institutions and community and other grassroots expressions of identity, citizenship, nation and sense of place.



### Emily

#### Graduate Certificate of Museum & Heritage Studies

Looking for a career change, I have always loved visiting Museums as a child and I enjoyed studying a minor in History during my undergraduate. This course seemed the perfect way to bridge the gap in my education and also test whether pursuing this field of study was for me.

Our work explores, amongst other issues, working with marginalised communities, repatriation, social justice issues and social activism in museums, the commemorative and memorial practices of working class communities and the trade union movement, Aboriginal critiques of heritage and museums, and multiculturalism and museums.

See [chms.cass.anu.edu.au](http://chms.cass.anu.edu.au)

### Further information

T 1800 620 032  
E [futurestudent@anu.edu.au](mailto:futurestudent@anu.edu.au)  
W [cass.anu.edu.au/short-courses](http://cass.anu.edu.au/short-courses)



CentreforHeritageandMuseumStudies



ANU\_CHMS